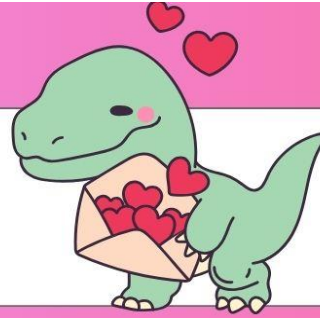




MORNINGSIDE

ELEMENTARY SCHOOL



FEBRUARY

2026

Sunday	Monday	Tuesday	Wednesday	Thursday	Friday	Saturday
1	2  Plory's Prize Patrol	3  Honor Roll 3rd Grade 9am 4th Grade 10 am 5th Grade 2pm	4	5	6  \$1 Choice T-Shirt	7
8 	9	10	11  KONA Ice Early Release Day	12 	13 PBIS All Out RED Day Creative Capers OM Parent Night Out	14 Valentine's Day 
15	16 NO SCHOOL Holiday: President's Day	17  Family Night 2pm - 8pm	18	19	20  \$1 Choice T-Shirt	21
22 Dental Sealants Grades 2 nd 4 th 5 th	23 Dental Sealants Grades 2 nd 4 th 5 th	24	25 NO SCHOOL Teacher Work Day	26 S.A.C at 7:30am 5th Gr. Field Trip Citizen of the Month 2:15 pm	27 Wax Museum	28 
						

FEBRUARY



MORNINGSIDE
ELEMENTARY SCHOOL



Message from Administration

"In the spirit of love and kindness, February reminds us of the importance of caring for one another. Let's continue to build a school community where empathy and learning flourish. Small acts of kindness can make a big difference. Together, we can create a space where everyone feels valued and supported."

~ Mrs. Forman & Mrs. Gomez

\$1 Choice T-Shirt: Feb 6th & Feb 20th

Students may wear a school appropriate t-shirt of their choice with uniform bottoms.
T-shirt must have sleeves and be school appropriate in words, images, and fit.

Other Important Dates to Remember

- 02/11/26- Early Release & 100th Day of School
- 02/13/26 - All out Red Day, Creative Capers, OM Parent Night Out
- 02/16/26 - President's day No School
- 02/17/26 - Chick-Fil-A Family Night 2-8pm
- 02/23&02/24 - Dental Sealants for 2nd, 4th AND 5TH grade
- 02/26/26 - Wax Museum & Citizen of the Month 2:15 pm



Quote of the Month

"What you do makes a difference, and you have to decide what kind of difference you want to make."
—Jane Goodall

Character Trait

Trustworthiness



Kona Ice 02/11/26

Pre-Pay ONLY

Students wishing to participate in Kona Ice must pre-pay. Sorry, no payments will be accepted at the event.

Please consider purchasing "Pay It Forward" to sponsor a classmate in need!

Creative Capers

This is similar to Build-a-Bear and makes the perfect Valentine's gift for your child

This is PRE-PAY ONLY!
Please pay at
www.schoolpay.com
from 02/1/26-02/12/26

Black History Month

2026 marks a milestone of both progress and persistence in the United States, the 100th anniversary of federal recognition for Black Americans. What began as a singular week of learning and recognition in 1926 has grown into an overall cultural observance of Black History throughout the month of February.

The 100-year anniversary prompts reflection not only on what has been accomplished, but also on why this work continues to matter.

Black History Month is often associated with familiar icons - Martin Luther King, Jr, Rosa Parks, Malcolm X, Harriet Tubman - yet the deeper intention is about uncovering thousands of stories once ignored: scientists, entrepreneurs, artists, academics, inventors, policy leaders, soldiers, and everyday citizens who shaped the nation.

For students, leaders, and global citizens, engaging with Black history is not only about honoring resilience - it is about building cultural competency, learning from systemic injustice, and developing the leadership skills required in an increasingly diverse world.

BLACK History

SLPS School Counselors are
Difference Makers!

- HAPPY SCHOOL COUNSELOR'S WEEK -



February 2nd-6th

Thank you for making a difference every day!

Feb. 6

Feb. 20

Choice

T-Shirt

\$1.00
each

YOUR
CHOICE



Students may wear a school-appropriate
t-shirt with dress code approved bottoms.

SHIRTS MUST CONTAIN SLEEVES, NON-REVEALING, AND COVER
MIDRIFF. WORDS AND IMAGES MUST BE SCHOOL-APPROPRIATE.

Funds collected will be used to enhance school community, including parental involvement activities,
student and staff recognition, incentives, and other expenses deemed appropriate by principal.



MORNINGSIDE ELEMENTARY KONA DAY

Wednesday, February 11
10:00am - 12:30pm

Kona is coming with a delectable array of nutritious and delicious treats! Our products are fortified with vitamin C and D. Sugar Free and Dye Free Options Available!

28% Goes Back to your School!

Prepay:

<https://customer.kona-ice.com/#/K1821412329>



KLASSIC

\$5.00
No Refill



KING

\$6.00
No Refill



KOWABUNGA

\$7.00
\$3.00



**COLOR
CHANGING**

\$7.00
\$3.00



KOLLECTABLE

\$7.00
\$3.00

CREATIVE CAPERS

FRIDAY

FEB.
13

2026



Create your own Collectable Animal at
Morningside Elementary School

\$20.00

SILVER PACKAGE

Includes: collectable animal,
wish insert and birth certificate



GOLD PACKAGE

Includes: collectable animal, outfit,
wish insert and birth certificate

\$35.00

\$16.00

OUTFIT ONLY

Extra outfits will be available on site at
the time of the event



SCAN
TO
PAY

VISIT
WWW.SCHOOLPAY.COM

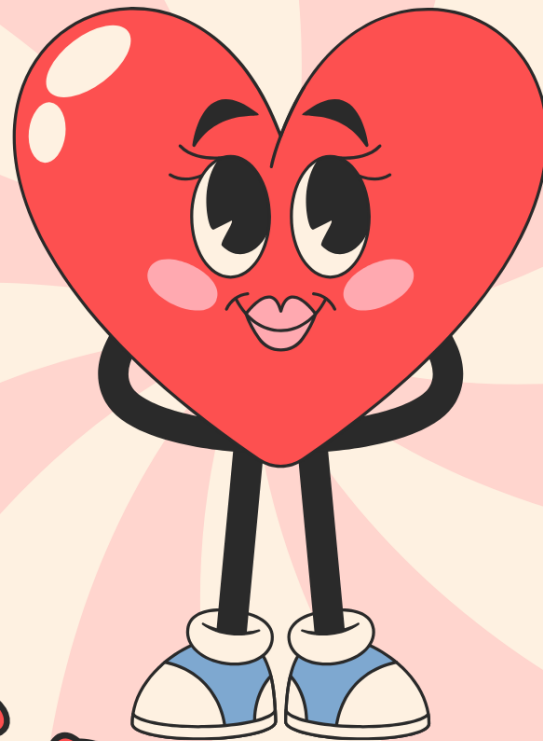
**No Cash Payments Accepted.

OR



**Last day to pay will be on 02/12/26

ALL YOU NEED

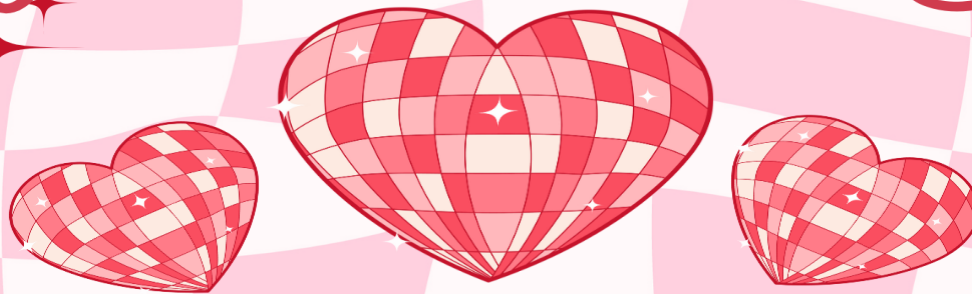


is
RED

A PBIS FREE DRESS UP DAY!
FEBRUARY 13TH, 2026
DRESS UP AND ALL OUT IN RED
SCHOOL APPROPRIATE ATTIRE

PLEASE JOIN US FOR AN
EVENT TO BENEFIT OUR OM TEAMS

Valentine Parent's Night Out



**FRIDAY
FEBRUARY 13**

**FOOD
MUSIC
CRAFTS**

DROP OFF 6 P.M. - PICK UP 9 P.M.

\$25
LIMIT TO THE
FIRST 50 STUDENTS

**PRE-PAY ON
SCHOOLPAY
BY FEB 11
NO REFUNDS**





Spirit Night

Tue., Feb. 17

2pm-8pm

Support Morningside Elementary
at Chick-fil-A Jensen Beach by
mentioning at checkout or use
code bluejays on the app to
ensure your purchase counts.



MORNINGSIDE
ELEMENTARY SCHOOL

SCHOOL ADVISORY COUNCIL

OPEN FOR ALL FAMILIES & COMMUNITY MEMBERS
7:30-8:15 AM

Agenda: February 26

- **JANUARY MINUTES**
- **BOOK REVIEW**
- **ATTENDANCE UPDATES**
- **SIP**
 - **DATA**
 - **UPDATES**
 - **BUDGET**
- **MARCH CALENDAR**
- **NEXT MEETING:**
MARCH 25, 2026

The School Advisory Council (SAC) assists in the preparation and evaluation of the results of the school improvement plan. All schools are governed by their SAC. This team of people represents various segments of the community—parents, teachers, administrators, support staff, business people and other interested community members. Parents shall be elected by parents. You are invited to become a member of SAC at Morningside Elementary.