

# RISING JUNIORS

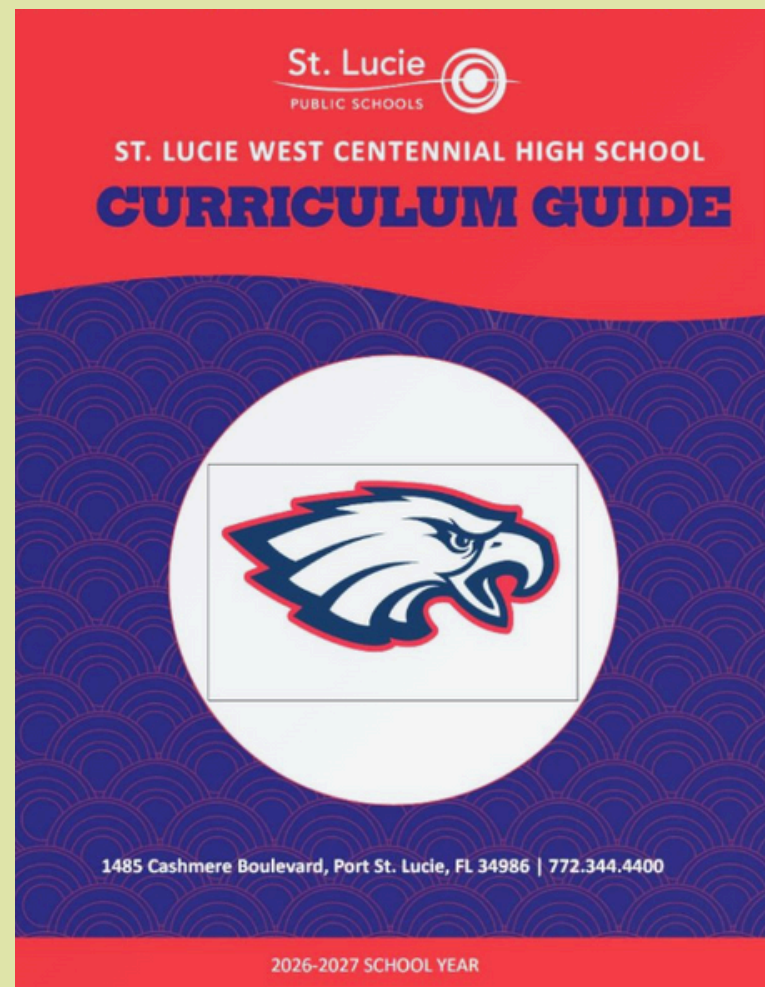
# Course Registration 2026-2027

# January 2026

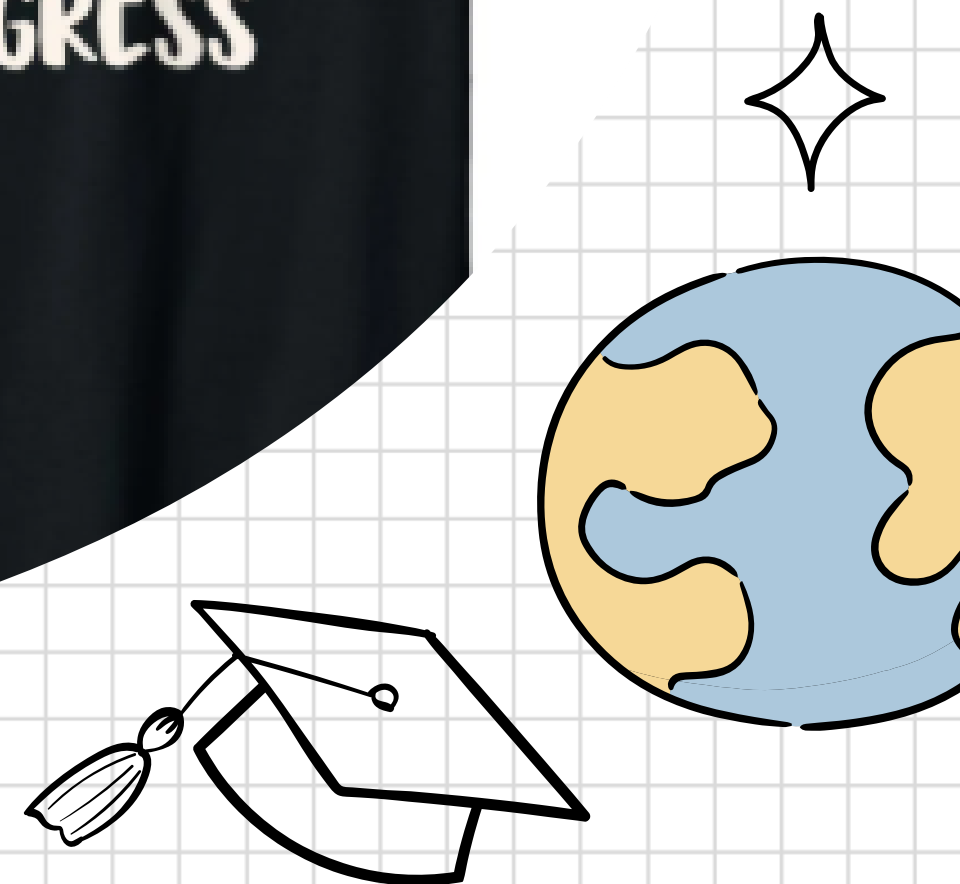
# Hello, soon to be Juniors! ✨🌀

## Curriculum Guide:

Available on our  
webpage under  
*School Counseling  
& Guidance*



School Counseling & Guidance –  
St. Lucie West Centennial High



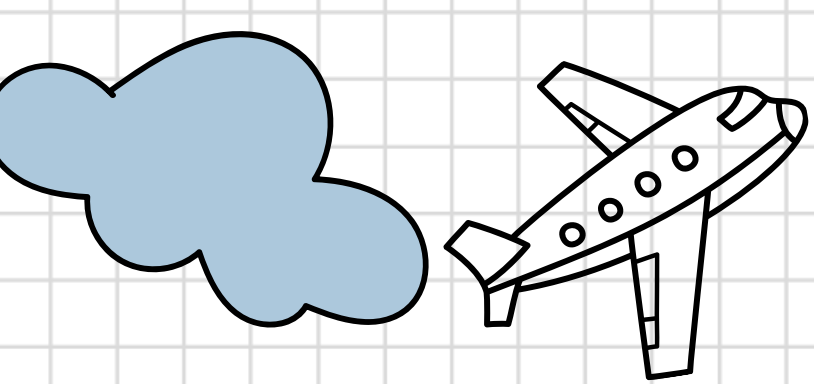
# Graduation Requirements

24 credits in specific areas

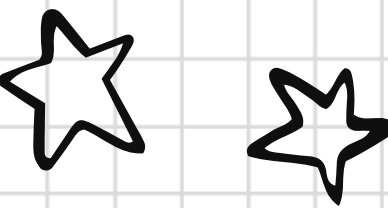
2.0 Cumulative GPA

Pass 10th grade ELA FAST

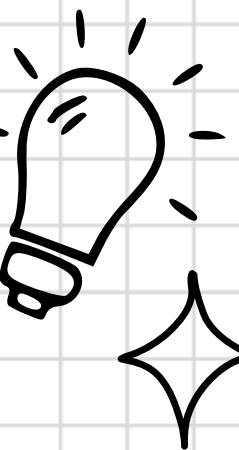
Pass Algebra 1 EOC



# Graduation Requirements



ENGLISH	4 Credits	English 1	English 2	English 3	English 4
MATH	4 Credits	Algebra 1	Geometry	Math	Math
SCIENCE	3 Credits	Biology	Science	Science	
SOCIAL STUDIES	3 Credits	World History	US History	US Gov/Econ	
HOPE	1 Credit	Health/PE			
PERF/PRAC ART	1 Credit	For example: 2D Art, Speech, Band, Chorus, CTE			
PERS FIN LIT	0.5 Credit	Personal Financial Literacy			
ELECTIVES	7.5 Credits	Arts	Foreign Language	AICE	CTE





# Skyward Graduation Requirements

Home	Graduation Requirements						
	Standard Diploma		View All Courses				
Calendar	Coursework Requirement Area	Required	Complete	In Progress	Scheduled	Remaining	Status
Gradebook	Total	24.000	13.500	3.500		10.500	In Progress
Attendance	American Government	0.500				0.500	
Student Info	American History	1.000				1.000	
Schedule	Economics	0.500				0.500	
Test Scores	English	4.000	1.500	0.500		2.500	In Progress
Graduation Requirements	English 1 (View Courses)	1.000	1.000				Completed
	English 2 (View Courses)	1.000	0.500	0.500		0.500	In Progress
Academic History	English 3	1.000				1.000	
Portfolio	English 4	1.000				1.000	
Health Info	Mathematics	4.000	3.500	0.500		0.500	In Progress
Login History	Algebra 1 or Equivalent (View Courses)	1.000	1.000				Completed
	Geometry or Equivalent (View Courses)	1.000	1.000				Completed
	Electives (View Courses)	2.000	1.500	0.500		0.500	In Progress
	Science	3.000	1.500	0.500		1.500	In Progress
	Biology 1 or Equivalent (View Courses)	1.000	1.000				Completed
	Electives (View Courses)	2.000	0.500	0.500		1.500	In Progress
	HOPE (View Courses)	1.000	1.000				Completed
	Performing Arts/Practical Arts (View Courses)	1.000	1.000				Completed
	World History (View Courses)	1.000	0.500	0.500		0.500	In Progress
	Personal Financial Literacy	0.500				0.500	
	General Electives (View Courses)	7.500	4.500	1.500		3.000	In Progress

# Skyward GPA

Home

Calendar

Gradebook

Attendance

Student Info

Food Service

Schedule

Test Scores

Graduation Requirements

Academic History

Portfolio

Health Info

Login History

Gradebook

ST. LUCIE WEST CENTENNIAL HIGH

\*\* As teachers update class assignments, the student averages and grades may be subject to change

Missing Assignments (Show All)

GPA

(ST. LUCIE WEST CENTENNIAL HIGH)

GPA Type	Cumulative GPA	Cumulative Earned Credits	Cumulative Failed Credits
2025 - 2026 School Year	(View Details)		
STATE	2.5789	9.5000	0.0000
2024 - 2025 School Year	(View Details)		
STATE	2.7143	7.0000	0.0000

English 2

Period 2 (7:33 AM - 9:03 AM)

SMART

C

B

D

C

Geometry

Period 3 (9:08 AM - 10:38 AM)

WEBSTER

C

B

B

Spanish 1

Period 4 (9:08 AM - 10:38 AM)

MATA-BRIZUELA

C

D

C

Biology 1

Period 5A (10:43 AM - 12:46 PM)

SOTOCONCEPCION

B

C

B

Soccer

Period 6C (10:43 AM - 12:46 PM)

BLACK

B

B

F

C

Tennis 1

Period 6C (10:43 AM - 12:46 PM)

BLACK

Intensive Reading 2

Period 7 (12:51 PM - 1:41 PM)

KRIGGER

B

B

D

B

BSTER

GPA

C2 Q2 SE1 S1

B F C

C B D C


C B B

C D C

B C B

B B F C

B B D B



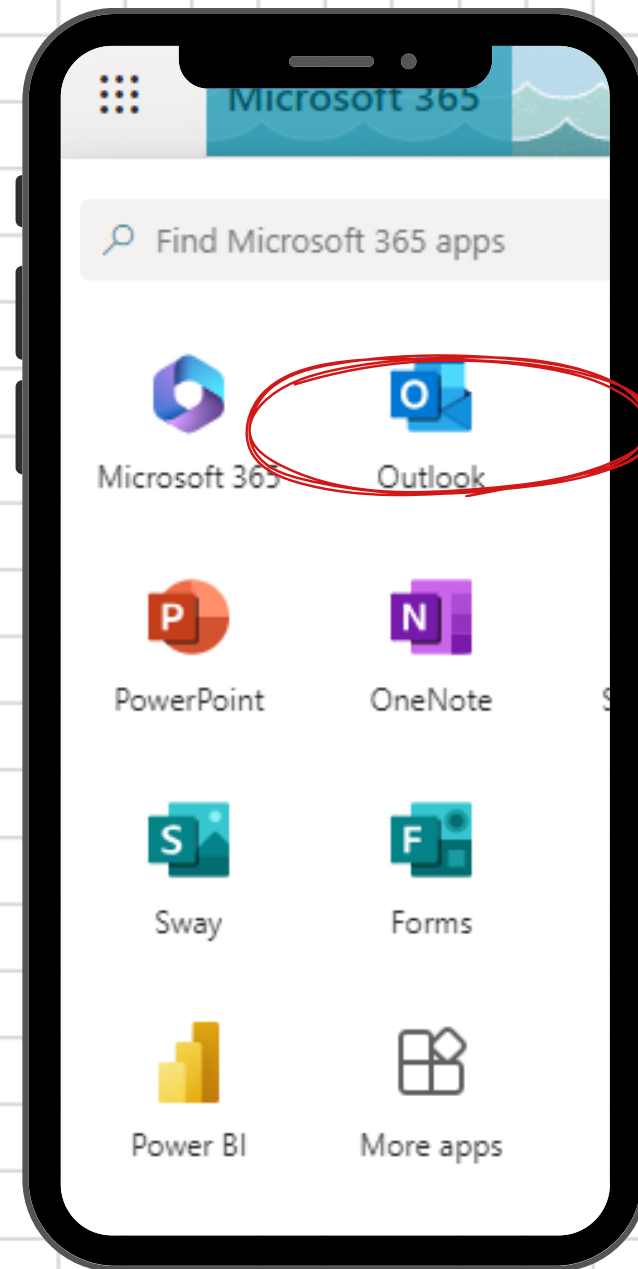
KEEP TRACK OF YOUR  
GRADUATION  
REQUIREMENTS!!



# Student Webmail

Step 1: Go to SLW Centennial Website

Step 2: Click Student Webmail link



(772) 344-4400 1485 Cashmere Boulevard, Port St. Lucie, FL 34986

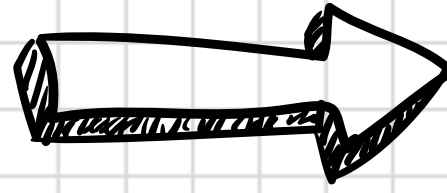


Step 3: Sign in using 562#@stlucieschools.org as username & lunch # as password

A screenshot of the St. Lucie Schools ADFS sign-in page. The page has a title 'St. Lucie Schools ADFS' and a subtitle 'Sign in with your organizational account'. There are two input fields: one for the username '562#@stlucieschools.org' and one for the password. A blue 'Sign in' button is at the bottom.



# Microsoft TEAMS



Outlook

Search

Find Microsoft 365 apps



Microsoft 365  
Copilot



Outlook



OneDrive



Word



Excel



PowerPoint



OneNote



SharePoint



Teams



Class Notebook



Sway



Forms



Calendar



Canvas



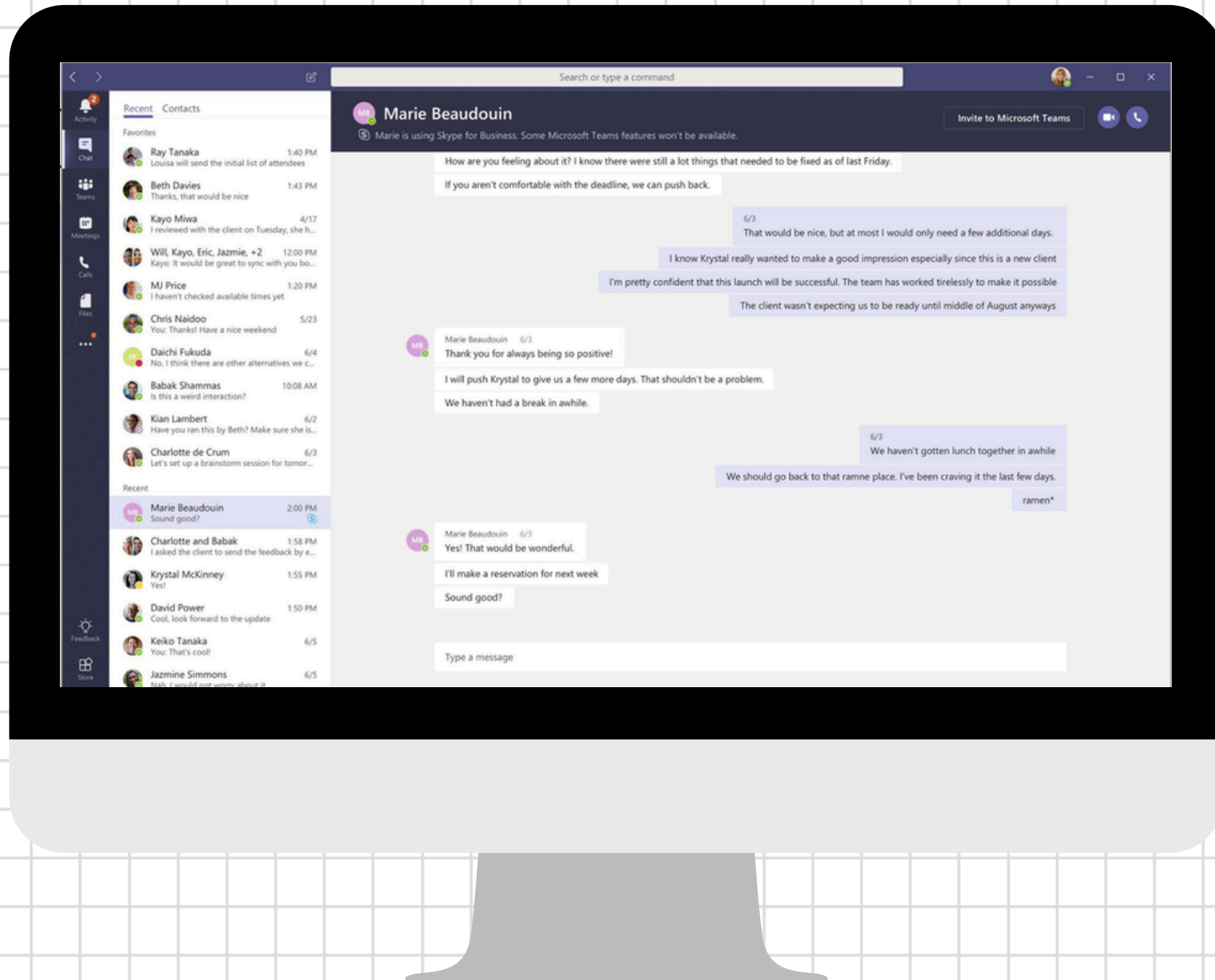
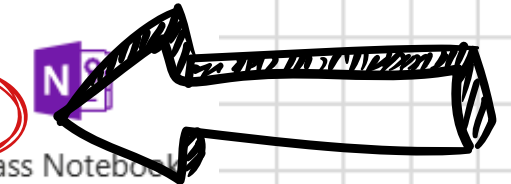
Stream



Power BI

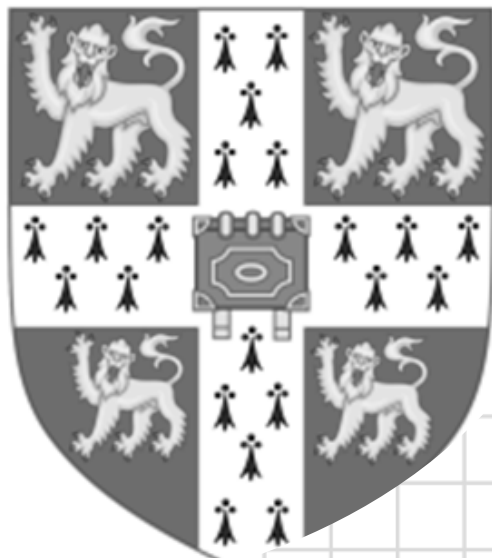


More apps



# Accelerated Courses

CAMBRIDGE  
INTERNATIONAL



AP<sup>®</sup>



AICE

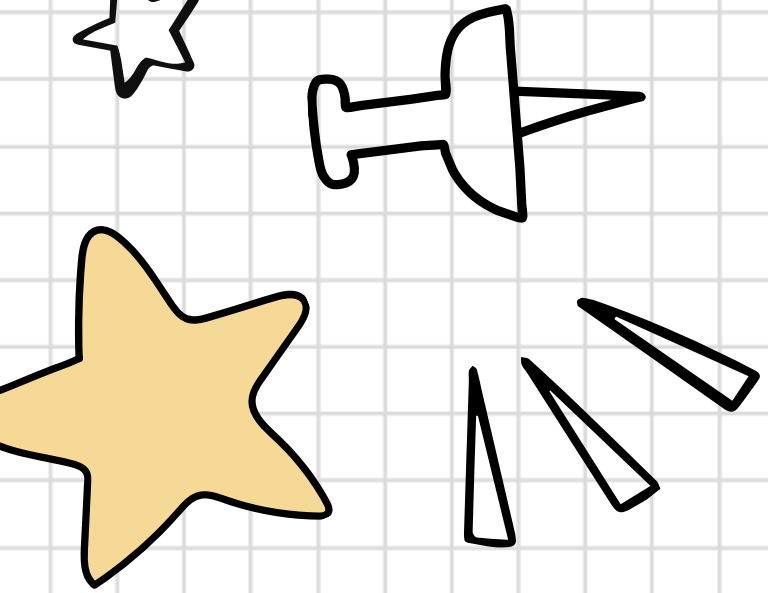
Advanced International  
Certificate of Education

AP

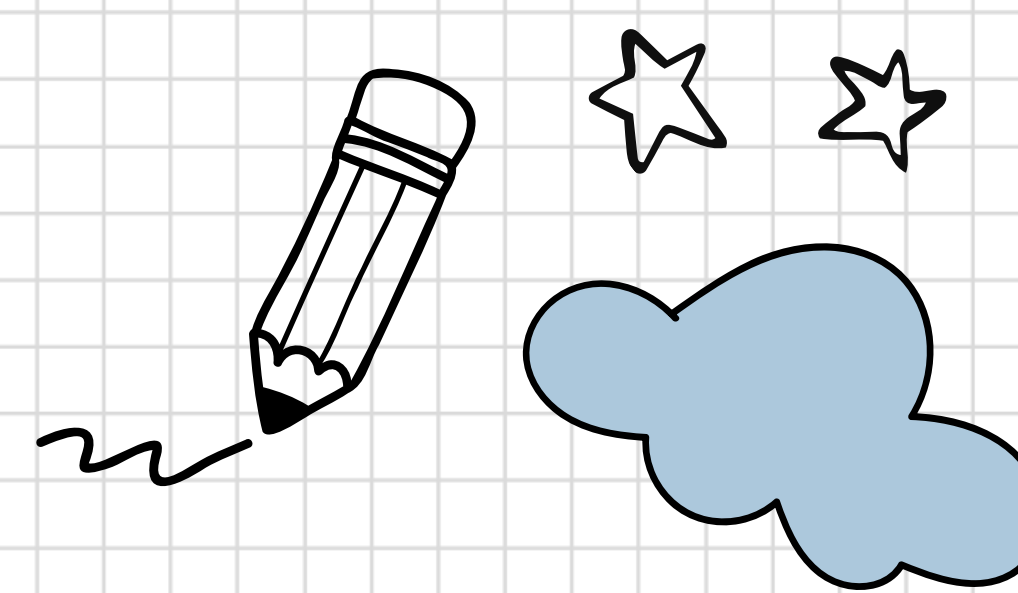
Advanced  
Placement

DE

Dual Enrollment



# AICE



AICE Coordinator: Ms. Willems - O101  
[lea-ann.willems@stlucieschools.org](mailto:lea-ann.willems@stlucieschools.org)

Students placed in AICE courses are not automatically working towards an AICE Diploma

Grades/GPA, attendance, discipline, assessment scores & teacher recommendation are considered for placement in AICE electives

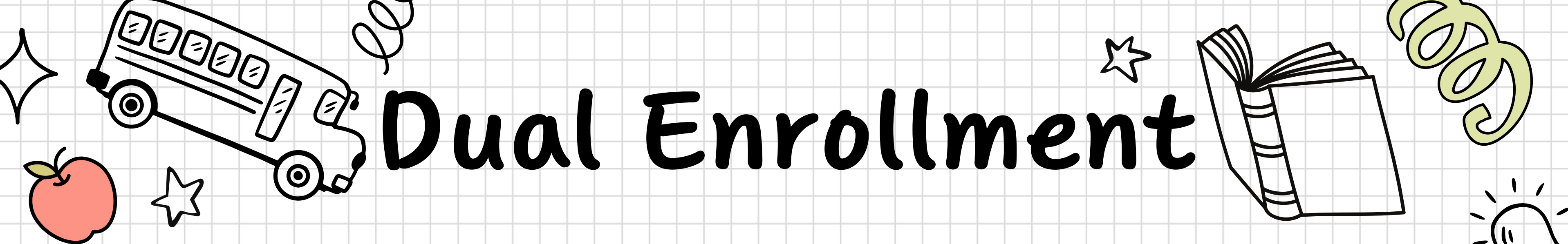
Each AICE course has an AICE exam administered in the Spring

College credit is earned by passing AICE/AP exam

AICE Diploma requires completion of seven AICE courses in four different groups

AICE Diploma recipients qualify for the highest Bright Futures Scholarship





# Dual Enrollment

## Eligibility

3.0 minimum cumulative GPA

Qualifying PERT scores

### DE Info Sessions:

March 24 - A & B Lunch

March 31 - B & C Lunch

April 2 - A & B Lunch

*\*more dates to come*

**SLWC DE Webpage**

## Offered at IRSC

Registration for Summer  
begins March 2nd

Students registering for Fall  
classes at IRSC must meet  
with Mrs. Alvarez or Ms.  
McAdoo in June/July.

## Offered at SLWC

Math courses:  
MAT1033 (0.5 credit)  
Intermediate Algebra

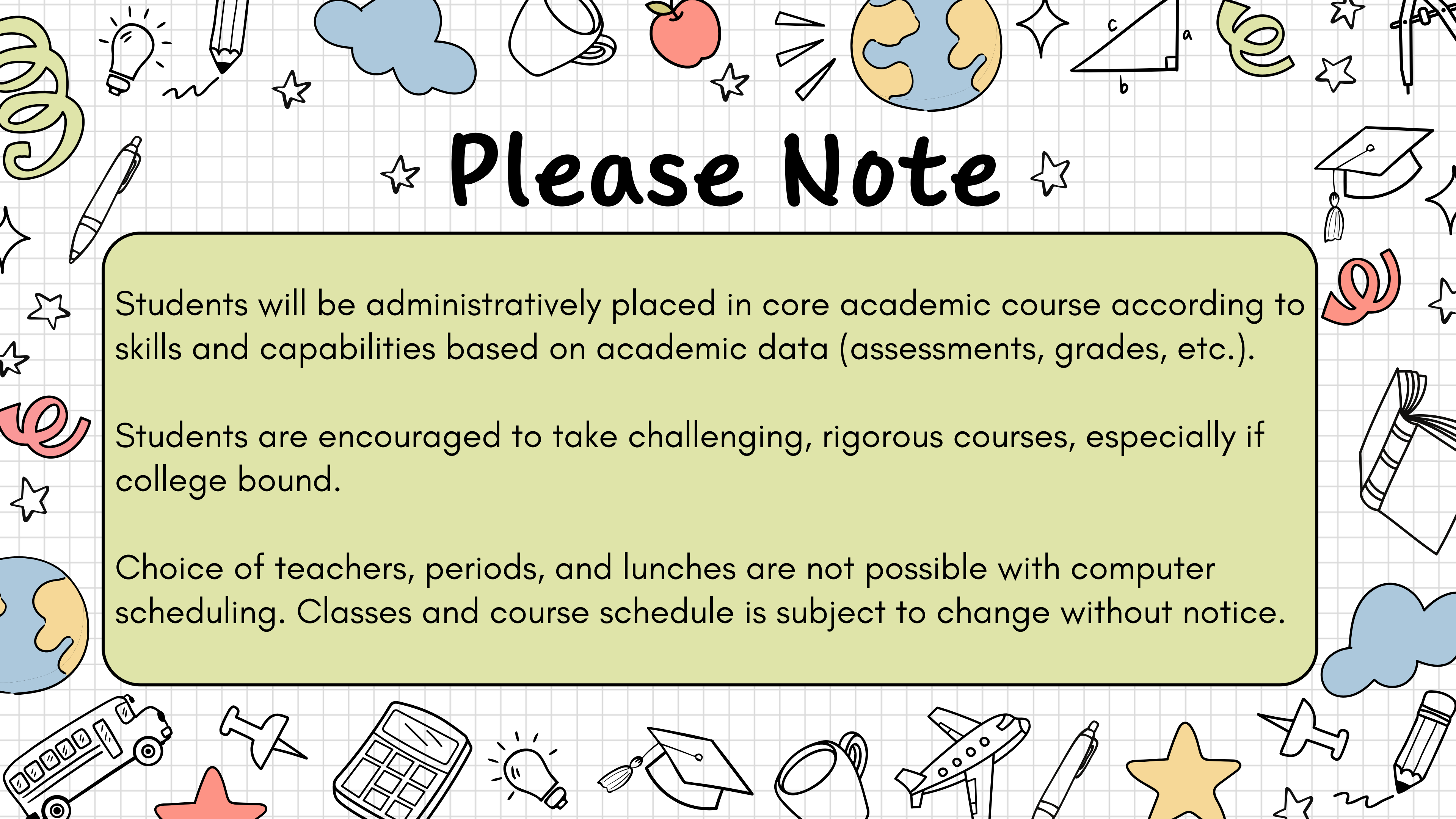
MAC1105  
College Algebra

MAC1140  
PreCalculus Algebra

## A vertical arrangement of four hand-drawn icons on a grid background. At the top is a graduation cap with a tassel. Below it is a five-pointed star. Under the star is a green, stylized leaf or swirl shape. At the bottom is a coffee cup. A thick black vertical line runs along the right edge of the grid.

	Yes	No
--	-----	----

Counselor Signature: \_\_\_\_\_ Date: \_\_\_\_\_

A decorative border surrounds the central text box, featuring various school-related icons such as a lightbulb, pencil, cloud, apple, globe, compass, ruler, graduation cap, book, calculator, and stars.

# ★ Please Note ★

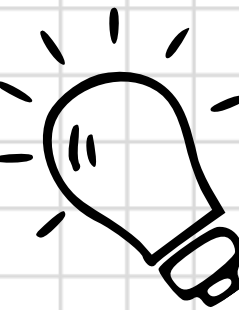
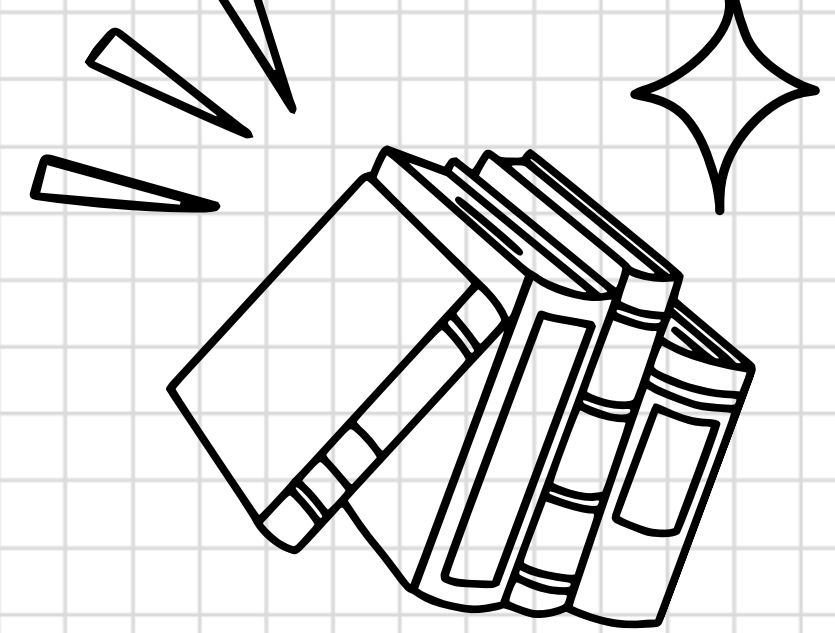
Students will be administratively placed in core academic course according to skills and capabilities based on academic data (assessments, grades, etc.).

Students are encouraged to take challenging, rigorous courses, especially if college bound.

Choice of teachers, periods, and lunches are not possible with computer scheduling. Classes and course schedule is subject to change without notice.



# New Courses for 2026-2027

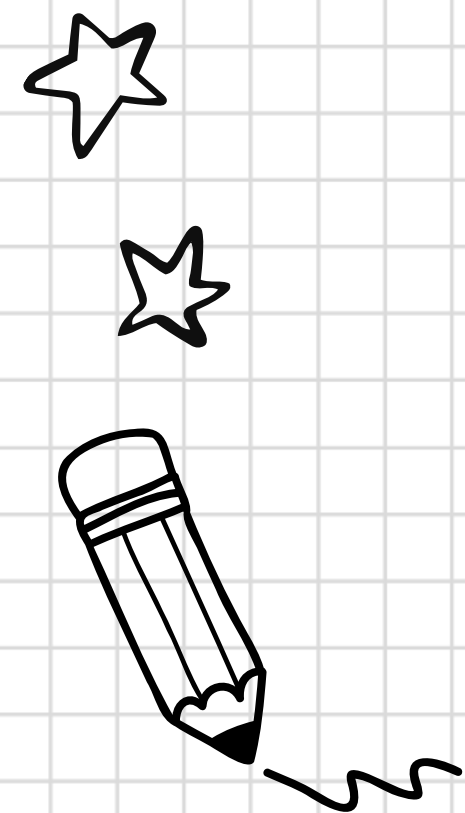


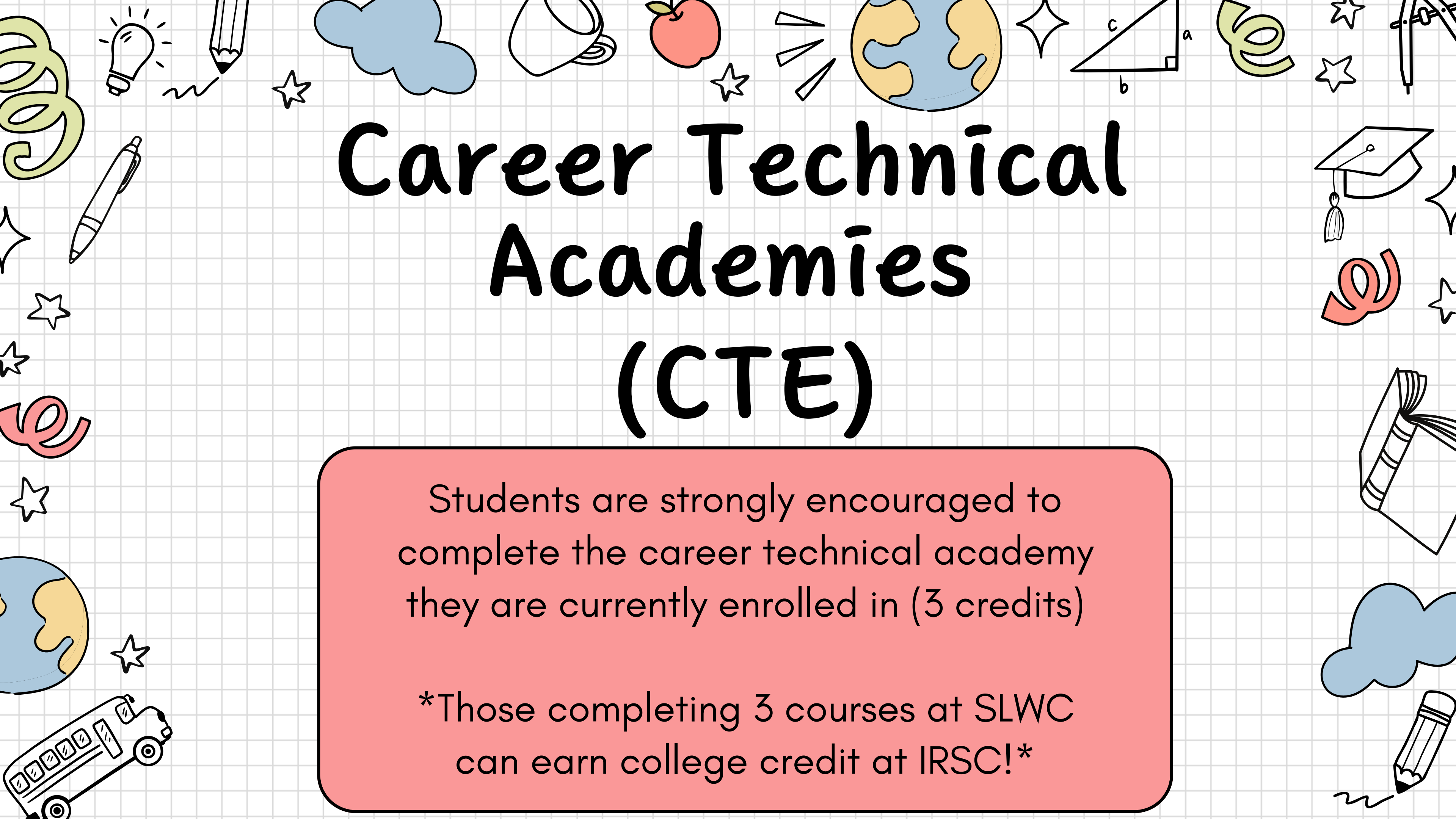
Dance  
Techniques 2

Aerospace  
Tech 3

Chorus 4

Keyboarding 4  
Honors

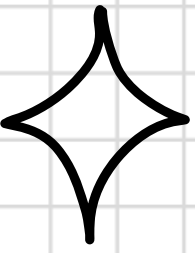




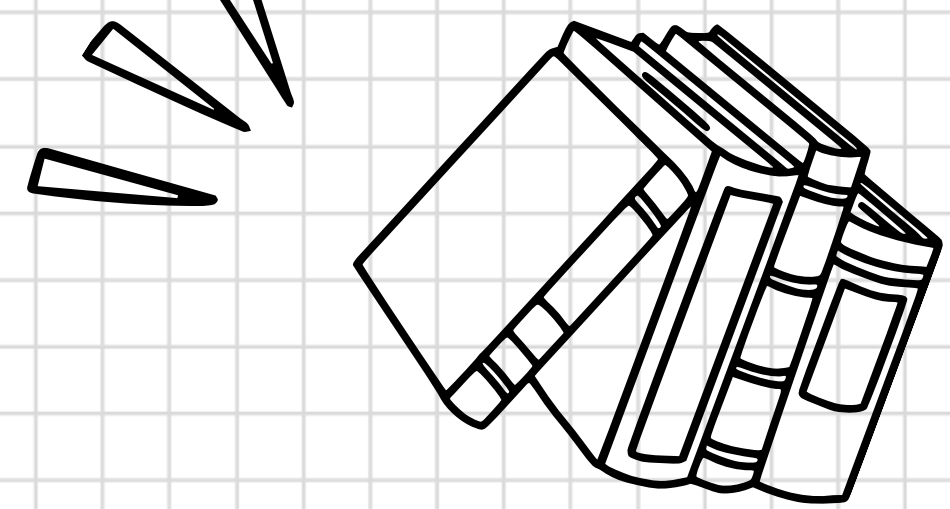
# Career Technical Academies (CTE)

Students are strongly encouraged to complete the career technical academy they are currently enrolled in (3 credits)

\*Those completing 3 courses at SLWC can earn college credit at IRSC!\*



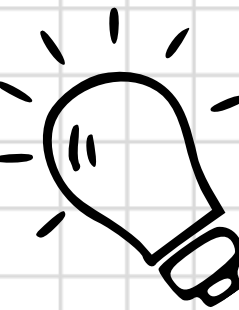
# Choosing Electives



Performance fine arts electives require afterschool participation and upper-level courses require teacher approval.

Leadership class requires an application that must be turned into Ms. Connell (J107)

NJROTC requires students to wear a uniform once a week & after school practices are part of the program

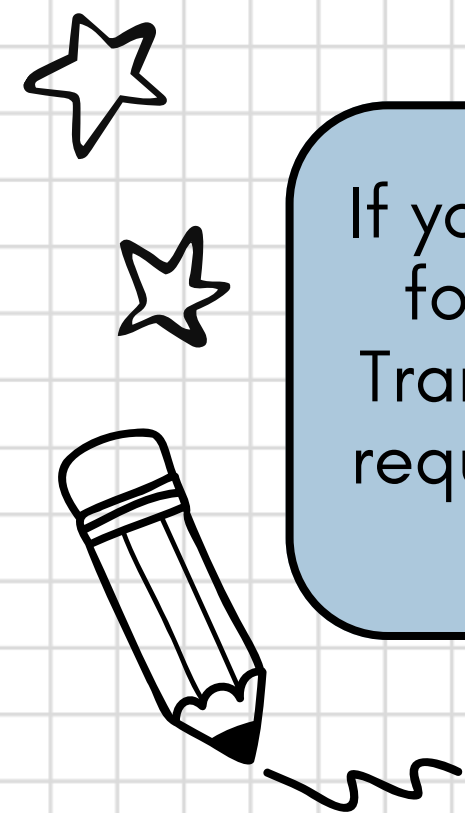


If you are approved for a Curriculum Transfer, you **MUST** request that course

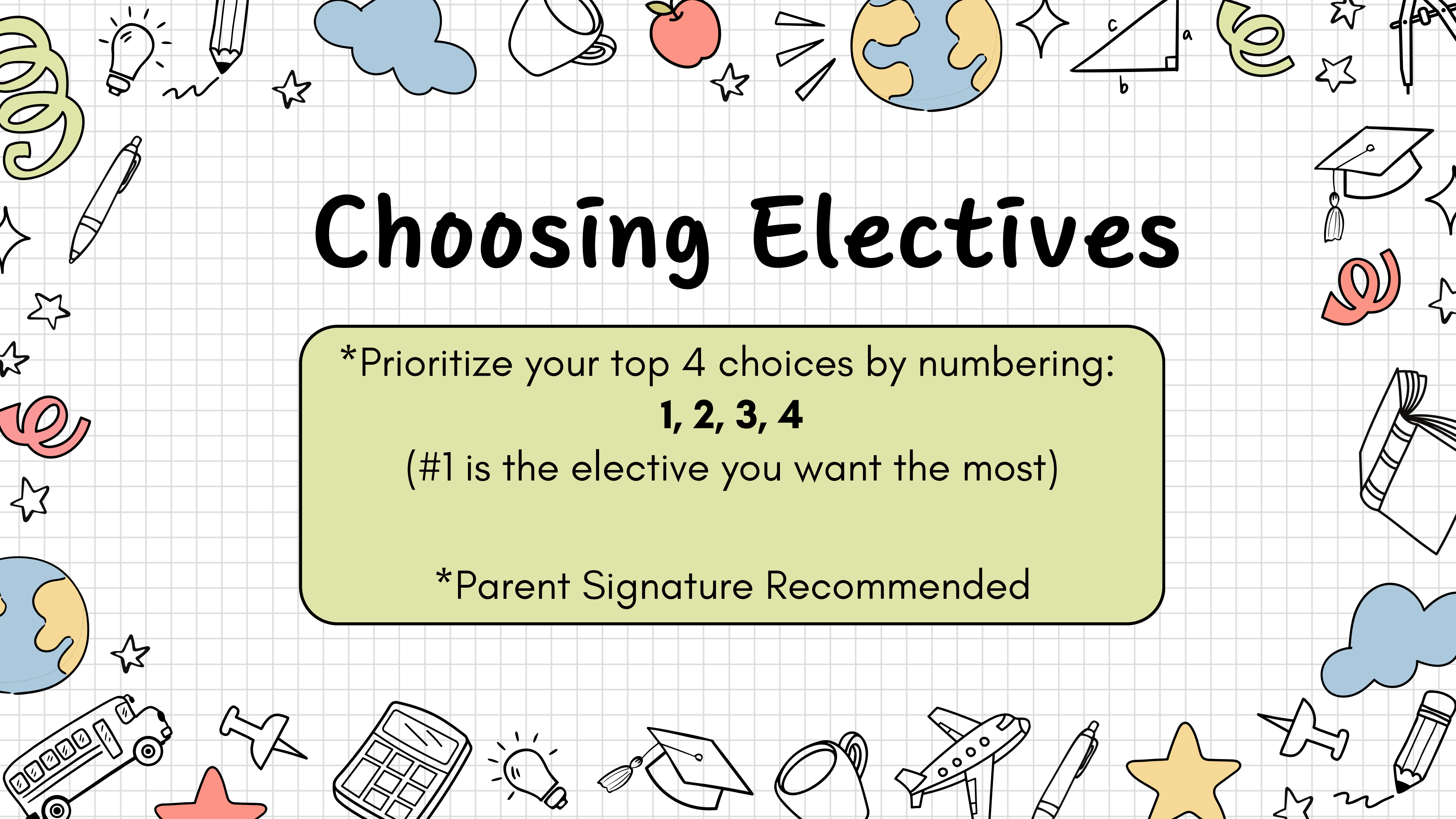
Do not request a course that has a prerequisite that you have not met

You are **NOT** allowed to take a class twice for credit

Your chosen electives **WILL NOT** be changed







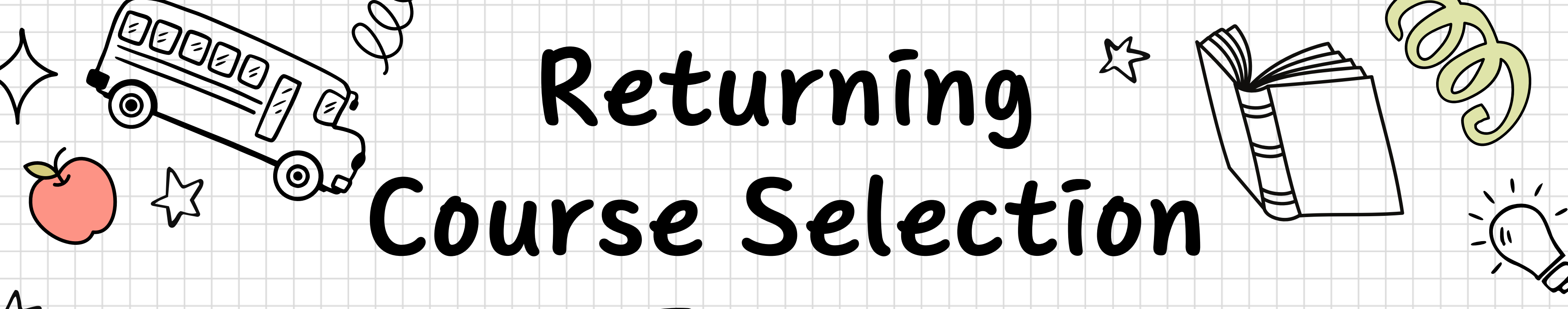
# Choosing Electives

\*Prioritize your top 4 choices by numbering:

**1, 2, 3, 4**

(#1 is the elective you want the most)

\*Parent Signature Recommended



# Returning Course Selection Forms

Completed forms are due Wednesday, February 4th (Day 2) or Thursday, February 5th (Day 1)

Classes will come down to the Auditorium to meet with School Counselors and return the completed forms

**! IMPORTANT**

**If your completed form is not returned to your School Counselor, one will be completed for you and there will be NO SCHEDULE CHANGES next year**



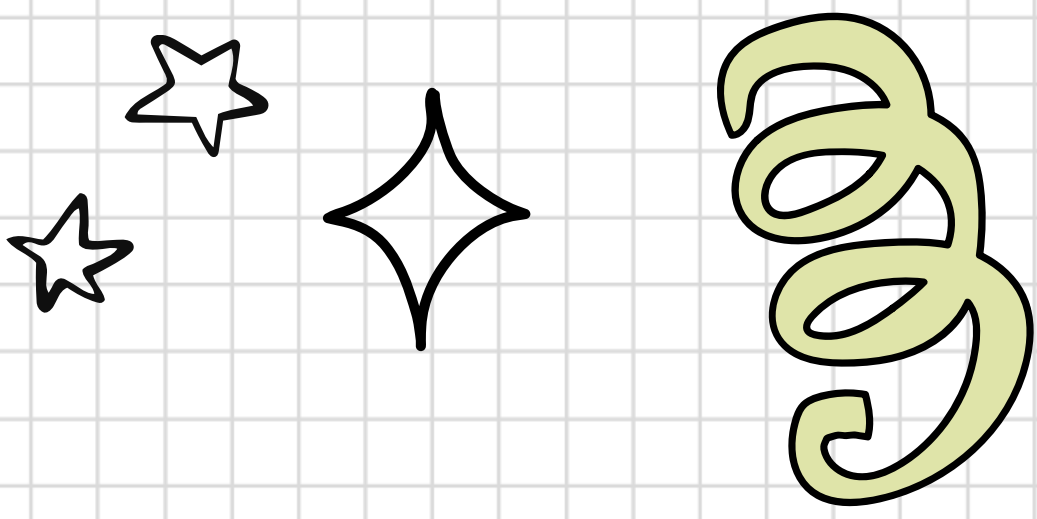
# Credit Recovery

Retake  
course(s) on  
campus

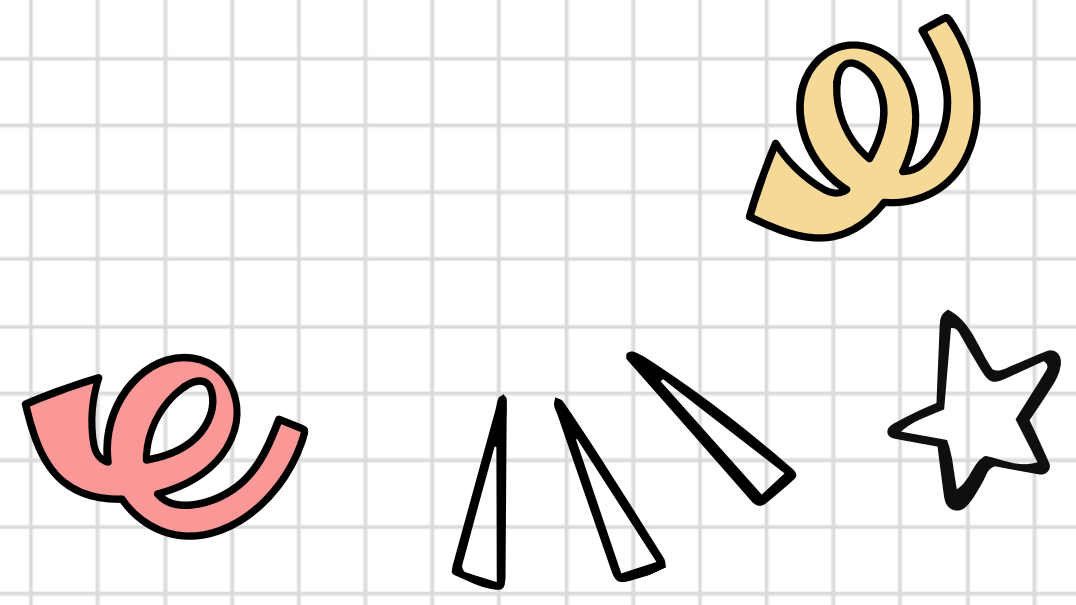
Summer  
School

FLVS/  
Mosaic





# School Counseling Department



**Mrs. Alvarez** (A-Ca)

N111

kristin.alvarez@stlucieschools.org

**Mrs. Cole** (Ce-Go)

N114

elizabeth.barnard@stlucieschools.org

**Ms. McAdoo** (Gr-Ma)

N116

tabitha.mcadoo@stlucieschools.org

**Mrs. Herring-Nance** (Mc-Ri)

N109

kim.herring-nance@stlucieschools.org

**Mrs. Warner** (Ro-Z)

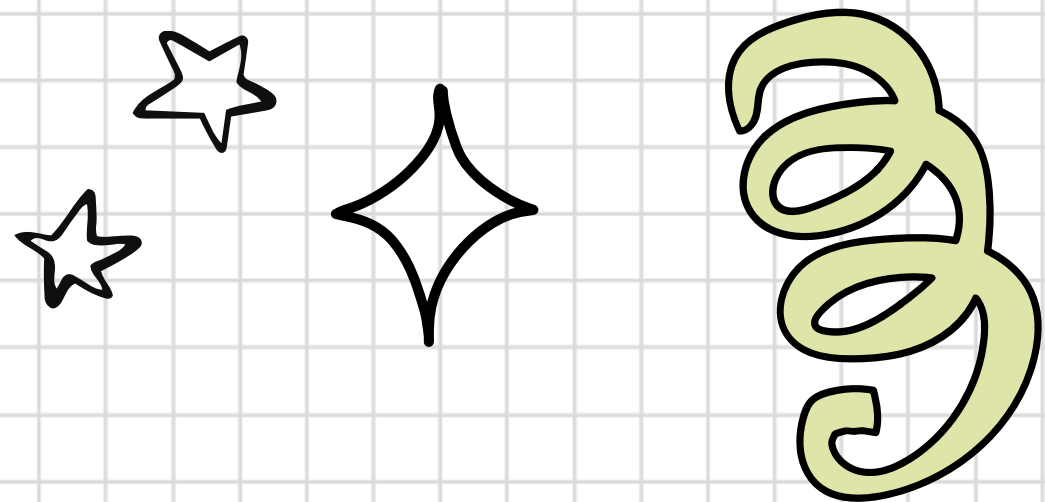
N110

leslie.warner@stlucieschools.org

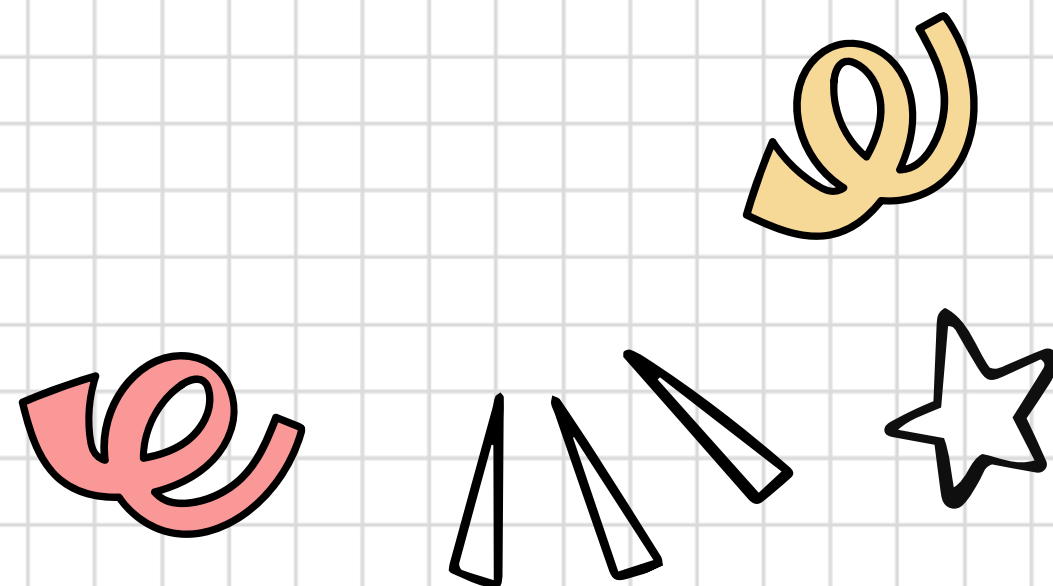
**Mrs. Diaz** (ELL)

N108

daisy.diaz@stlucieschools.org



# Important Contacts



**Mrs. Miller, Guidance Clerk**

Volunteer Hours

N124

[maria.miller@stlucieschools.org](mailto:maria.miller@stlucieschools.org)

**Mrs. Surloff, Registrar**

Transcripts

N112

[jaclyn.surloff@stlucieschools.org](mailto:jaclyn.surloff@stlucieschools.org)

**Mrs. Register, Graduation Coach**

At-Risk, Credit Deficient, Low GPA

N136

[jennifer.register@stlucieschools.org](mailto:jennifer.register@stlucieschools.org)

**Mrs. Hernandez-Naffziger,  
Attendance Clerk**

N137

[attendanceslwch@stlucieschools.org](mailto:attendanceslwch@stlucieschools.org)

Junior year,  
here we go!